

ROBIN HOOD

&

THE RIDDLES OF SHERWOOD FOREST



AVALON THEATRE COMPANY

STUDY GUIDE

ROBIN HOOD & THE RIDDLES OF SHERWOOD FOREST



Welcome to *Robin Hood & the Riddles of Sherwood Forest* by Avalon Theatre Company.

Our touring production of *Robin Hood & the Riddles of Sherwood Forest*, an original presentation, has been designed to “Educate, Enlighten & Entertain!”

In this study guide, developed by professional educators and English-language teachers, you will find Pre- and Post-Performance Activities and Discussion Topics, as well as teacher and student resources.

For students who are learning English we have also included key vocabulary so that your students will get the most out of our performances. This study guide may be reproduced and distributed to students. It can be found on our website

www.avalontheatrecompany.com

Avalon Theatre Company’s *Robin Hood & the Riddles of Sherwood Forest* is an interactive performance and we encourage your students’ participation and we will be asking a number of your students to join us on stage.

Avalon Theatre Company welcomes your opinion & suggestions on our performances and Study Guides, so that we can continue to provide teachers and students with the finest in-school, educational theatre experience.

We love hearing from students and teachers! Please encourage your students to leave a comment on our Facebook page (Avalon Theatre Company – Group Page)

<https://www.facebook.com/groups/89366695578/> or write us letters and tell us what you thought of the show!

Sincerely,

Avalon Theatre Company

ROBIN HOOD & THE RIDDLES OF SHERWOOD FOREST

TABLE OF CONTENTS

The Vocabulary and Activities that are highlighted in red are the most important in ensuring that your students understand and enjoy Robin Hood & the Riddles of Sherwood Forest. If you only have a limited amount of time to prepare your students for the show, we suggest you focus on these Vocabulary Items & Activities.

*All of the Activities in our Study Guide may be copied and given to your students.
The Answer Key for all of the Activities is on Page 23.*

THE LEGEND of ROBIN HOOD.....	4
ROBIN HOOD & the RIDDLES OF SHERWOOD FOREST ~ Synopsis	5
VOCABULARY.....	6 & 7
VOCABULARY ACTIVITIES.....	8 - 12
ACTIVITY 3 – Riddle Me This	13
ACTIVITY 4 – <i>After the Show</i>	14
ACTIVITY 5 – (True or False) <i>After the Show</i>	15
WORD SOUP.....	16
THEATRE – <i>Discuss & Draw Activity</i>	17
WHO’S WHO IN THE THEATRE – <i>Discuss & Write Activity</i>	18
ACTIVITY ANSWERS.....	23
ABOUT THE ARTISTS.....	28

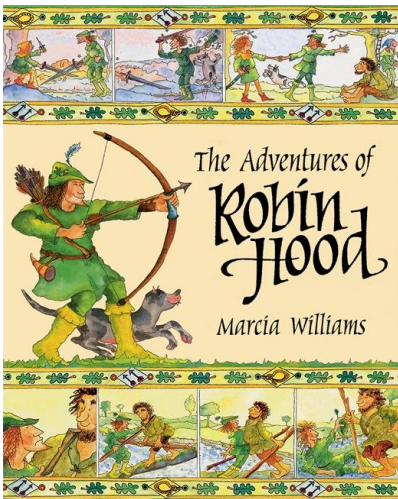
ROBIN HOOD

&

THE RIDDLES OF SHERWOOD FOREST

THE LEGEND OF ROBIN HOOD

You may wish to begin by having a brainstorming session with the students. Ask them if they know the difference between a legend and a true story. Ask them to name some legends (King Arthur, Zorro, and William Tell for example). Explain that the story of Robin Hood is a legend even though many people think he really existed. Ask them questions to see how much they know about Robin Hood, where he lived and the names of other people and events in his life.



Robin Hood has been the subject of many films, books, and television shows. There are many theories as to who Robin Hood was, but it is not known if the stories of Robin Hood are based on any real historical figure.

Robin (or Robyn) was a very common nickname for Robert in the Middle Ages. The surname "Hood" (or Hude or Hode etc), referring to a head-covering, was also very common. There are a number of people called "Robert Hood" or "Robin Hood" found in medieval records. From 1228 onwards the names 'Robinhood', 'Robehod' or 'Hobbehod' occur often in English Justice documents and these terms mean fugitive or outlaw.

Robin Hood is first mentioned in the 14th century poem, *Piers Plowman*. In it, Robin Hood is the champion of the poor, protects women, has outstanding skill as an archer and hates the Sheriff of Nottingham. By the 15th century, "Robin Hood Games" or plays that were an important part of early May Day festivities. In 1833, Howard Pyle wrote, *The Merry Adventures of Robin Hood* from which most of the modern day Robin Hood stories have derived.



In the 20th century more stories were added to the legend. The film *The Adventures of Robin Hood*, portrayed Robin as a hero on a national scale. The Robin Hood legend has changed throughout history. Robin has evolved from a bandit to an English national hero of epic proportions, who heroically defends the throne of England.

ROBIN HOOD

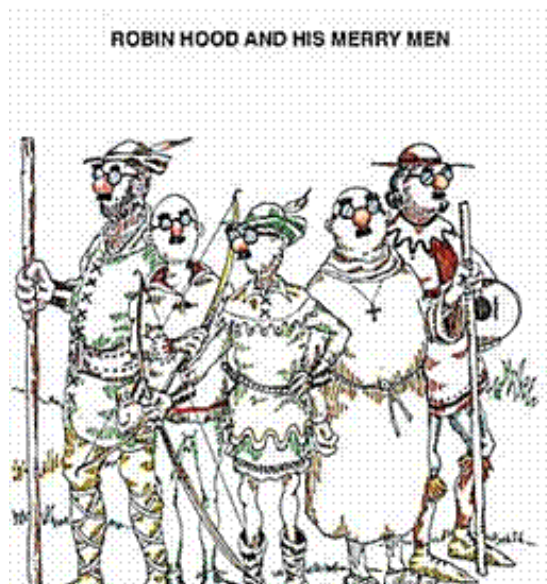
&

THE RIDDLES OF SHERWOOD FOREST

by Avalon Theatre Company ~ Synopsis

Whether or not Robin Hood was real, his story is like many legends. The events and accomplishments in his life are used to teach us lessons about our own life and the world around us. Avalon Theatre Company's adaptation uses many of these legends and lessons. Here is the basic plot of ROBIN HOOD AND THE RIDDLES OF SHERWOOD FOREST.

The evil Sherriff of Nottingham tricks Robin Hood and makes him drink a magic potion that will turn Robin into stone in 24 hours. In a book, Maid Marian discovers an antidote to the poison that will cure Robin and save his life. To make the antidote they need to find two special, magical ingredients. Marian tells Robin that each ingredient is protected by a “keeper” or guardian who live somewhere in Sherwood Forest. Each keeper will ask Robin and Marian a riddle. Robin and Marian have to answer the riddle correctly to get the magical ingredient. Robin thinks that this seems easy until Marian explains that if they answer either of the riddles incorrectly something terrible will happen to them both!



ROBIN HOOD

&

THE RIDDLES OF SHERWOOD FOREST

VOCABULARY

The following is a list of some of the vocabulary from the play which teachers may choose to pre-teach before the performance.

NOUNS

Map Mirror Hunting horn Archery Arrow Face
Head Lungs Sponge A strand of hair An outfit (clothing)
Shoes Footwear High heels Sleeve Tights A make-over
Outlaw Wood cutter Merry Men Henchmen The Moody Men
Mother Daughter Hag Hideout Secret Camp Forest
Meadow Lake Labyrinth Poison A cure Potion
Ingredient Ointment

VERBS

To like To protect To keep safe To hurt To promise To marry
To steal To rob To destroy To dislike To fight To get rid of
To need To dress To wear To buy (bought) To go shopping
To dance To shout To live To breathe To feed To drink
To ask To riddle To answer To tell To explain To find
To see To remember To meet To bump into (to meet by chance)
To speak To think To turn To hide To lose To defeat
To give up To arrest To force To take away To kneel down
To turn into stone To petrify

ROBIN HOOD

&

THE RIDDLES OF SHERWOOD FOREST

VOCABULARY

ADJECTIVES

magical	short	confused	strange	sensible
handsome	funny	fat	confusing	brave
strong	ugly	angry	intelligent	vain
expensive	evil	pretty	mysterious	tall
beautiful	weak	merry	expensive	old
nasty	rotten	stinky	romantic	deaf
moody	alive	happy	friendly	dumb
sneaky	wicked	blind	dangerous	dark
eternal	ruined	stupid	ridiculous	chic
young	quiet	wonderful	aggressive	true

ROBIN HOOD

&

THE RIDDLES OF SHERWOOD FOREST

ACTIVITY # 1 - VOCABULARY

Ask students to place the nouns into the correct category.

NOUNS

Footwear Outlaw Map Face Hideout Mother
Mirror Lungs Labyrinth Shoes Woodcutter Ointment
Sponge Head Lake Daughter Secret camp High-heels
Forest Hunting horn Poison A strand of hair Archery
An Outfit Merry Men A Makeover Henchmen

CLOTHING (4)

PARTS OF THE BODY (4)

PLACES (5)

PEOPLE (6)

OBJECTS (*Things*) (8)

ROBIN HOOD

&

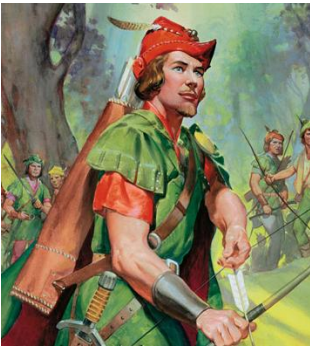
THE RIDDLES OF SHERWOOD FOREST

ACTIVITY # 2 – VOCABULARY- ADJECTIVES

Ask students to match the adjectives to the characters.

ADJECTIVES.

magical	fun	short	confused	strange	brave
handsome	funny	fat	confusing	strong	ugly
intelligent	evil	pretty	mysterious	beautiful	funny
happy	old	nasty	rotten	friendly	dumb
sneaky	wicked	dangerous	stupid		



Robin Hood is _____



Maid Marian is _____

ROBIN HOOD

&

THE RIDDLES OF SHERWOOD FOREST

ACTIVITY # 2 – VOCABULARY- ADJECTIVES (CONTINUED)

Ask students to match the adjectives to the characters.

ADJECTIVES.

magical	fun	short	confused	strange	brave
handsome	funny	fat	confusing	strong	ugly
intelligent	evil	pretty	mysterious	beautiful	funny
happy	old	nasty	rotten	friendly	dumb
sneaky	wicked	dangerous	stupid		



The Sheriff of Nottingham is _____



The Merry Men are _____

ROBIN HOOD

&

THE RIDDLES OF SHERWOOD FOREST

ACTIVITY # 2 - VOCABULARY- ADJECTIVES (CONTINUED)

ADJECTIVES.

magical	fun	short	confused	strange	brave
handsome	funny	fat	confusing	strong	ugly
intelligent	evil	pretty	mysterious	beautiful	funny
happy	old	nasty	rotten	friendly	dumb
sneaky	wicked	dangerous	stupid		



The Hag is _____



The Moody Men (The Evil Henchmen) are _____



The Two-Headed Gorgon is _____

ROBIN HOOD

&

THE RIDDLES OF SHERWOOD FOREST

ACTIVITY #3 – HAVE GOT OR HAS GOT!

Look at the people on the left and the objects on the right. Match the people to the objects by writing phrases using “have got” or “has got”.

Example: Robin Hood has got a) a bow and arrow.

1. The Hag _____ .

2. The Tree Wife _____ .

3. The Merry Men _____ .

4. Robin Hood _____ .

5. Maid Marian _____ .

6. The Moody Men _____ .

7. The Sheriff _____ .

8. The Two-Headed Gorgon _____ .

a.) a bow and arrow

b.) a mirror

c.) new clothes

d.) a Portuguese Cookbook

e.) a rope

f.) a book called, “Potions, Poisons & Remedies”

g.) two names

h.) a magical flower

ROBIN HOOD

&

THE RIDDLES OF SHERWOOD FOREST

ACTIVITY #4 - RIDDLE ME THIS!

Below are the riddles from the play. You may wish to check or teach the meaning of the underlined vocabulary. Alternatively translate the riddles into Portuguese. Then ask the students individually, in pairs or in groups to try and guess the answers to the riddles. We do not give the answers here, so you really will have to watch the play carefully to find out the answers.



RIDDLE # 1 ~

I have holes on the top and on the bottom. I have holes on the left side and on the right side. I have holes in the middle but I still retain water. What am I?

ROBIN'S RIDDLE ~

I am not alive but I grow. I do not have lungs but I need air. I have no mouth but water kills me. What am I?

RIDDLE 2 ~

What is deaf (so it cannot hear), is dumb (so it cannot speak) and is blind (so it cannot see) and always tells the truth?



Ask the students to write riddles of their own or have students find riddles in books or on the internet. Divide the class into two teams. Each team asks a riddle and the other team has 5 minutes to discuss and figure out the answer. Keep score and see which team wins!

ROBIN HOOD

&

THE RIDDLES OF SHERWOOD FOREST

ACTIVITY #5 – AFTER THE SHOW

After the play ask students to answer the following questions.

1. Where does Robin Hood live?
2. Who lives in Nottingham Castle?
3. Which shop did Marian buy the book of potions from?
4. Which person doesn't like shopping?
5. Who is having archery lessons?
6. When the Hag says, "Hello handsome!" to the Sheriff what does he reply?
7. What is the name of the magazine that the Hag has got?
8. What will the potion of petrification do to Robin?
9. Who sells lemonade?
10. Can you name two of Robin's Merry Men?
11. Why is The Tree Wife suspicious of Robin and Marian?
12. What is the name of the Two-Headed Gorgon?
13. What's the name of Dave's dog?
16. Who wants to marry Maid Marian?
17. Why does the Hag have to go home?
18. At the end of the play where do Robin and Marian decide to go?

ROBIN HOOD

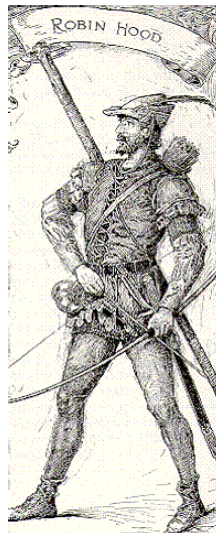
&

THE RIDDLES OF SHERWOOD FOREST

ACTIVITY #6 – TRUE OR FALSE?

After the show have the students answer TRUE or FALSE for each question

1. Robin Hood helps the poor.
2. Robin Hood thinks fashion is important.
3. The Sheriff is very vain.
4. Both the Sheriff and Maid Marian like clothes.
5. The Hag thinks the Sheriff is handsome.
6. Robin and Marian drink some lemonade.
7. Answering the riddles can be very dangerous.
8. The Merry Men say, “For Robin and England.”
9. There are 6 Moody Men.
10. Marian likes “sensible” shoes.
11. The Merry Men participate in a fashion show.
12. The Tree Wife is not a tree.
13. The Tree Wife doesn’t like the Sheriff.
14. The Two-Headed Gorgon is terrifying but easy to understand.
15. Robin turns into stone for 10 minutes.
16. The Sheriff and Marian get married.
17. The Hag likes to cook “Cozido á Portuguesa.”



ROBIN HOOD

&

THE RIDDLES OF SHERWOOD FOREST

ACTIVITY #7 - WORD SOUP!

Maid Marian is making a delicious Word Soup for dinner! Have students find the vocabulary words listed below in the puzzle.

C W X P G N U N O M R L O S X
O F W E Q J A J A G O R G O N
N H F L N M H H R K V B K I U
F M C I E V G R E V H O S S V
U O A E R N R O B I N H O O D
S L R R I E E Y S W E M C K C
I T A T I R H P N R O C I N U
O U T B U A O S W I Y D R U A
N O R X Y N N O B D R S A K N
N Y X F G R O Y C D E K B E O
E U P E H D I E L L H U L A M
N O I T O P H N I E C T G F V
U C F O K Q N H T T R K A N D
E A Q O Y F Z B C H A V E V D
B V B F W L I I W M G O N W F

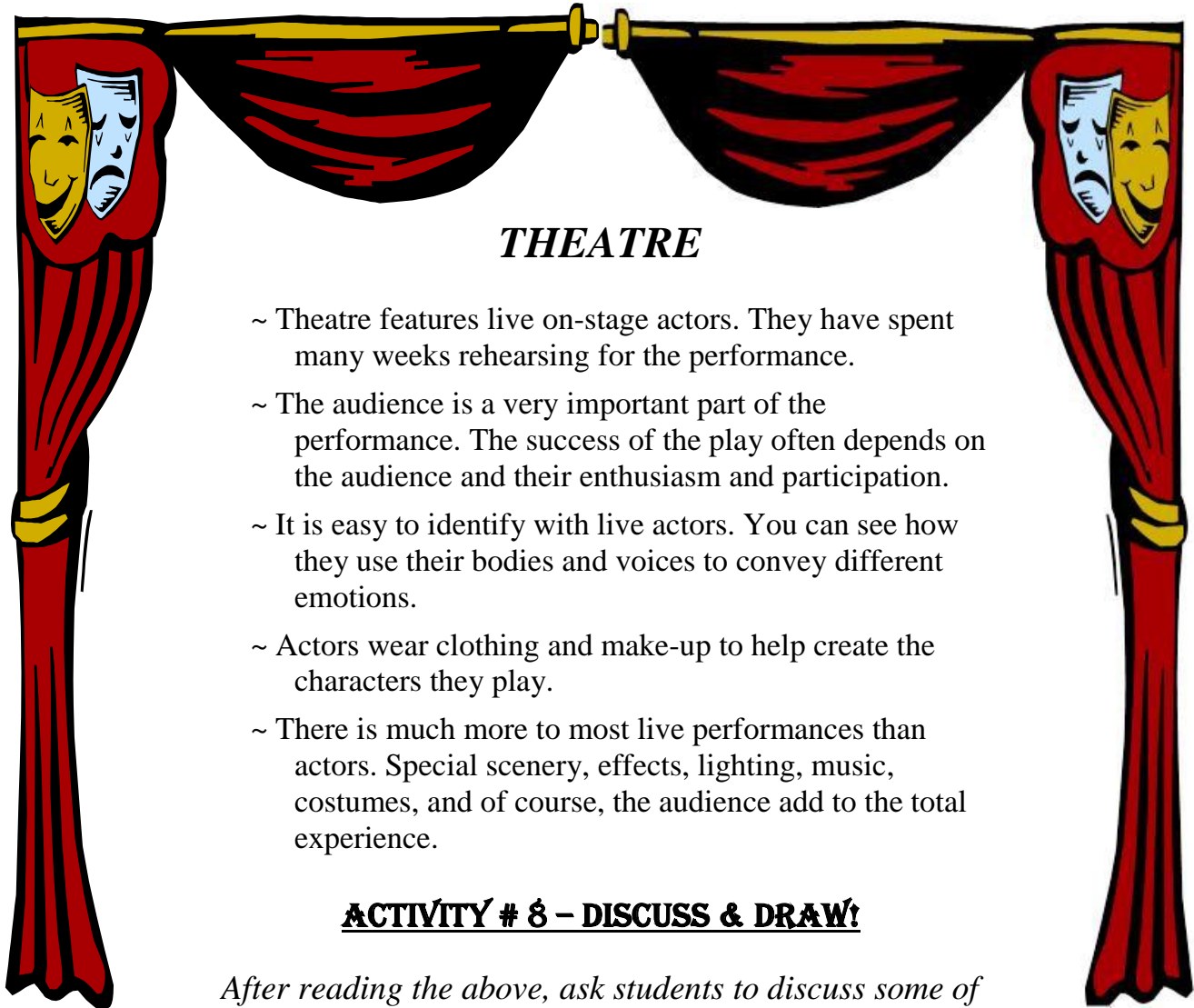


ARCHERY	CONFUSION	GORGON	LABYRINTH	MARIAN
POTION	NOTTINGHAM	RIDDLE	SHERIFF	
ROBINHOOD	SHERWOOD	SPONGE	TREES	

ROBIN HOOD

&

THE RIDDLES OF SHERWOOD FOREST



THEATRE

- ~ Theatre features live on-stage actors. They have spent many weeks rehearsing for the performance.
- ~ The audience is a very important part of the performance. The success of the play often depends on the audience and their enthusiasm and participation.
- ~ It is easy to identify with live actors. You can see how they use their bodies and voices to convey different emotions.
- ~ Actors wear clothing and make-up to help create the characters they play.
- ~ There is much more to most live performances than actors. Special scenery, effects, lighting, music, costumes, and of course, the audience add to the total experience.

ACTIVITY # 8 - DISCUSS & DRAW!

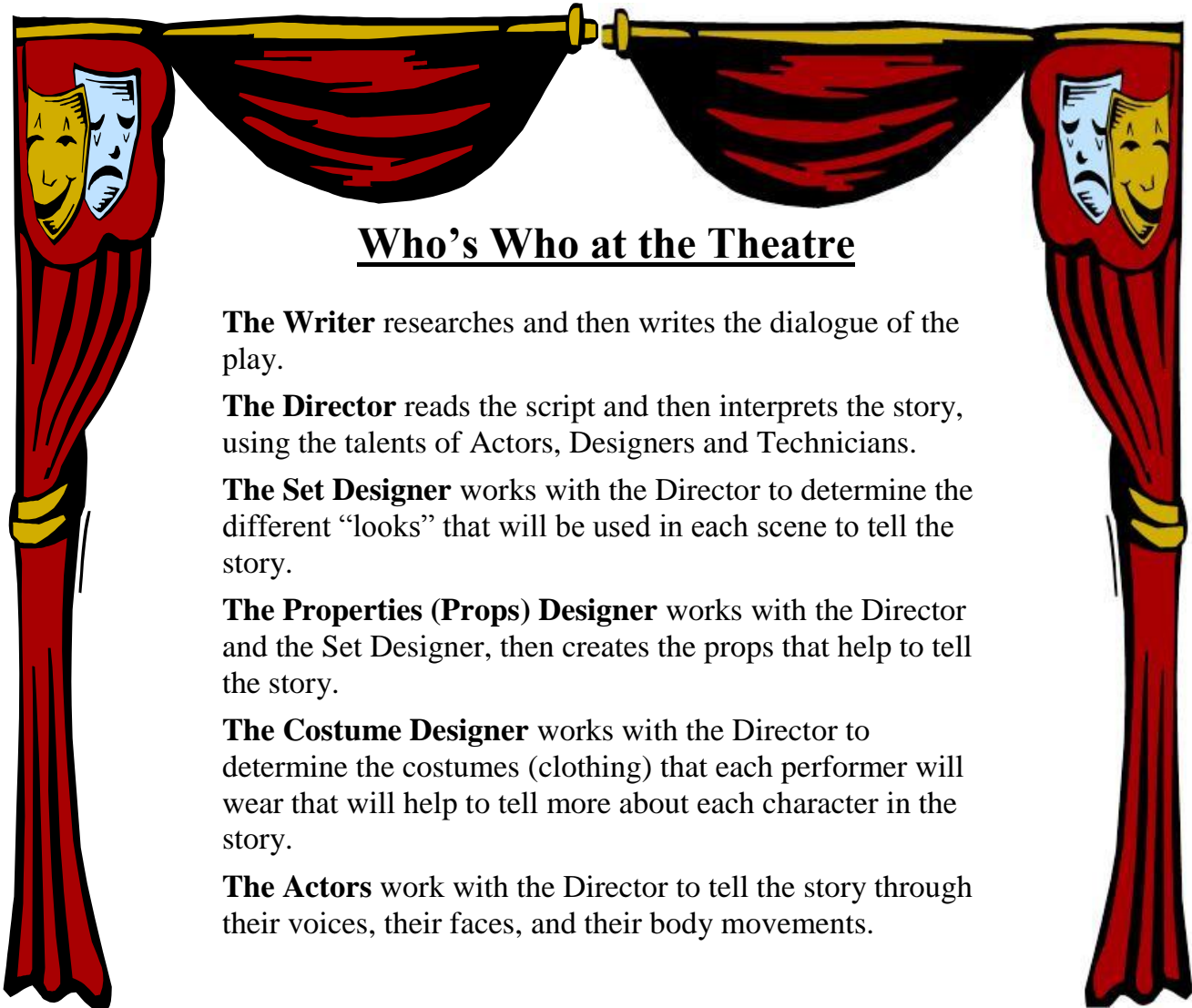
After reading the above, ask students to discuss some of the theatre questions below.

- 1.) What was your favourite part of the play? Who was your favourite character and why?
- 2.) What is the difference between TV and a live play? Which do you like better and why?
- 3.) Draw a picture of a favourite scene or character.
- 5.) In 25 words or less, describe the plot of the play.

ROBIN HOOD

&

THE RIDDLES OF SHERWOOD FOREST



Who's Who at the Theatre

The Writer researches and then writes the dialogue of the play.

The Director reads the script and then interprets the story, using the talents of Actors, Designers and Technicians.

The Set Designer works with the Director to determine the different “looks” that will be used in each scene to tell the story.

The Properties (Props) Designer works with the Director and the Set Designer, then creates the props that help to tell the story.

The Costume Designer works with the Director to determine the costumes (clothing) that each performer will wear that will help to tell more about each character in the story.

The Actors work with the Director to tell the story through their voices, their faces, and their body movements.

ACTIVITY #9 – DISCUSS

- 1.) Talk about different things used during the play that helped to tell the story. What things (voices, body movements, props, sounds music and costumes) were used to portray different characters?
- 2.) Pretend that you are the Writer.. What other ideas would you have added to the play?
- 3.) Discuss the things the Actors did on stage. (Where they were standing, how they moved and how they said their lines, their expressions, their voice). How did the Director use these things to tell the story?
- 5.) What would you need to be a Costume Designer? (history, research, sewing, etc.)? Why is the right costume important to the character in the play?
- 6.) Choose a character from the play and discuss things the Actor did to create that character. Why might an actor change his presentation because of audience reaction? Would it be easy to be an actor? What might you have done differently?

ROBIN HOOD

&

THE RIDDLES OF SHERWOOD FOREST

ACTIVITY #10 – SCIENCE ACTIVITY!



Robin Hood is set in Sherwood Forest, England. Established in the 10th century, it was nearly 19,000 acres – covering 30 miles. It was set aside as a royal hunting ground. You can still visit Sherwood Forest – though it has shrunk to a mere 450 acres. The “Major Oak” is a giant Oak tree, 33 feet around and is believed to be over 800 years old!

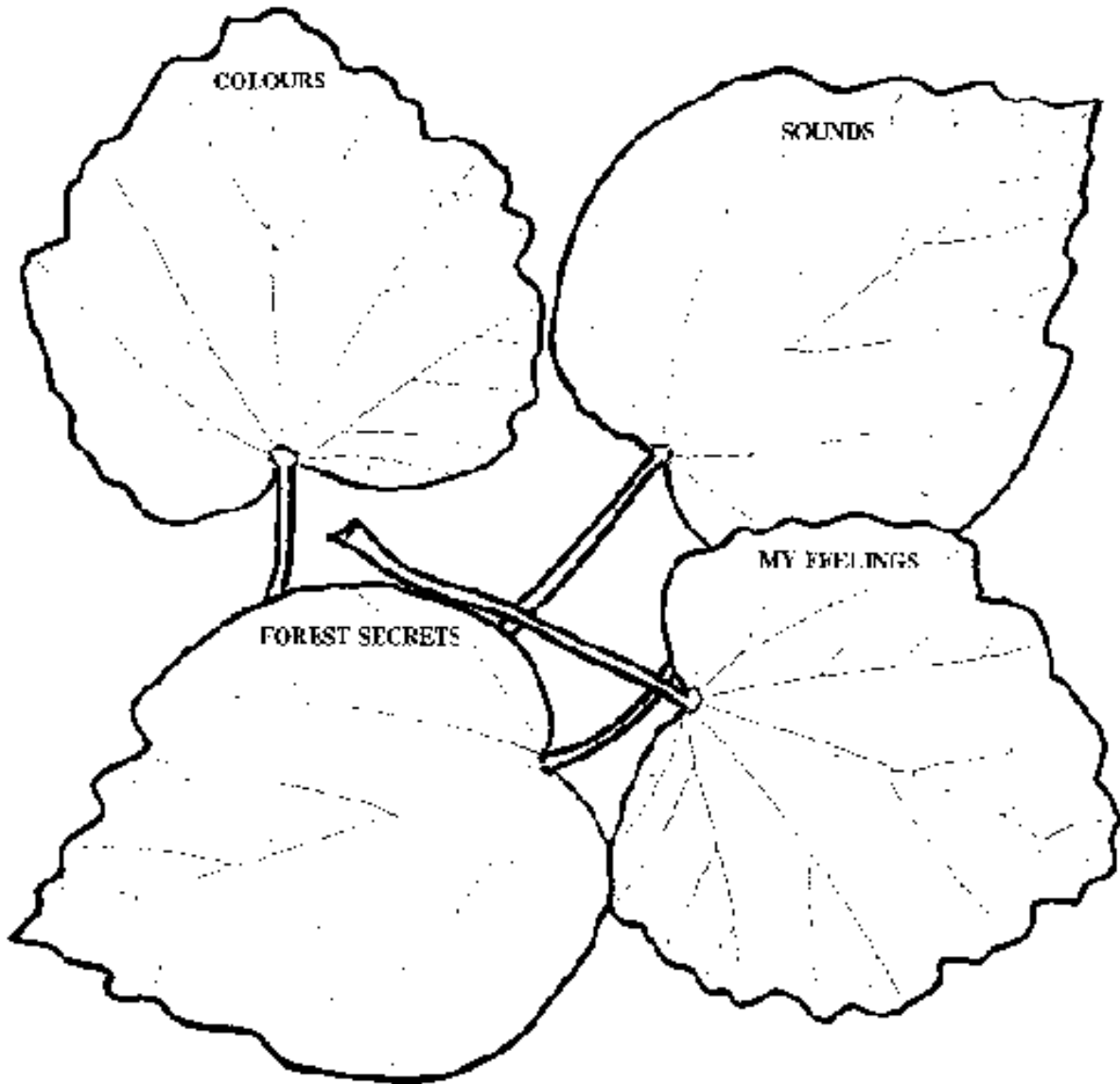
The Activity on the next page is an enjoyable activity that allows students to appreciate their surroundings and use their senses. Ask each student to find a quiet spot outdoors (preferably in the woods) and let them sit quietly without speaking for 10 minutes. Ask them to look and listen carefully! Then have them write down as many words as they can to best describe what they experienced. You could copy and hand out a page such as the one on the next page.

ROBIN HOOD

&

THE RIDDLES OF SHERWOOD FOREST

ACTIVITY #10 – SCIENCE ACTIVITY! (CONTINUED)



We suggest you visit www.nicif.pt Prosepe is a forest education project started in 1993 in Portugal currently involving 355 schools. Schools form 'Clubs of the Forest'. Materials and a regular journal for schools are produced.

ROBIN HOOD



THE RIDDLES OF SHERWOOD FOREST

ANSWERS

ACTIVITY # 1 – VOCABULARY

CLOTHING (4) : Footwear, Shoes, High-heels, An Outfit

PARTS OF THE BODY (4): Face, Lungs, Head, A Strand of Hair

PLACES (5) : Hideout, Labyrinth, Lake, Secret Camp, Forest

PEOPLE (6): Outlaw, Mother, Woodcutter, Daughter, Merry Men, Henchmen

OBJECTS (8): Map, Mirror, Ointment, Sponge, Hunting Horn, Poison, Archery, A Makeover

ACTIVITY # 2 – VOCABULARY-ADJECTIVES

This activity is designed to have students become familiar with different adjectives and how they can be used to describe different characters. There are many possible correct answers!

ACTIVITY #3 – VOCABULARY

1. The Hag **has got (d) a Portuguese Cookbook.**
2. The Tree Wife **has got (h) a magical flower.**
3. The Merry Men **have got (c) new clothes.**
4. Robin Hood **has got (a) a bow and arrow.**
5. Maid Marian **has got (f) a book called, “Potions, Poisons and Remedies.”**
6. The Moody Men **have got (e) a rope.**
7. The Sheriff **has got (b) a mirror.**
8. The Two-Headed Gorgon **has got (g) two names.**

ACTIVITY #4 - RIDDLE ME THIS!

Riddle 1 - A Sponge

Riddle 2 – Fire

Riddle 3 – A Mirror

ROBIN HOOD



THE RIDDLES OF SHERWOOD FOREST

ACTIVITY #5 – AFTER THE SHOW!

- 1.) Sherwood Forest
- 2.) The Sheriff of Nottingham
- 3.) Zara
- 4.) Robin
- 5.) Marian
- 6.) “Hello, Ugly”
- 7.) Forest Fashions
- 8.) Turn him to stone
- 9.) The Sheriff of Nottingham
- 10.) Alan o’Dale, Little John, Will Scarlet, Friar Tuck
- 11.) Because she thinks they are woodcutters who want to destroy the forest.
- 12.) Dave (or Dave-Dave)
- 13.) Rex
- 14.) The Sheriff
- 15.) Because she has something cooking in the oven for dinner.
- 16.) To Sherwood Shopping.

ACTIVITY #6 – TRUE OR FALSE

- 1.) True
- 2.) False
- 3.) True
- 4.) True
- 5.) True
- 6.) False (Only Robin drinks the lemonade.)
- 7.) True
- 8.) False (The Merry Men say, “For Sherwood, England and Shopping!”)
- 9.) False (There are four Moody Men.)
- 10.) False
- 11.) True
- 12.) True
- 13.) True
- 14.) False (He is not terrifying and he is very difficult to understand.)
- 15.) False (He never really turns to stone.)
- 16.) False
- 17.) False (She likes to cook “Crianças á Portuguesa.”)

ACTIVITY #7 – WORD SOUP!

C W X P G N U C O M R L O S X
O F W E Q J A J A G O R G O N
N H F L N S H H R K V B K I U
F M C I E V G R E V H O S S V
U O A E R N R O B I N H O O D
S L R R I E E Y S W E M C K C
I T A T I R H P N R O C I N U
O U T B U A O S W I Y D R U A
N O R X Y N N O B D R S A K N
N Y X F G R O Y C D E K B E O
E U P E H D I E L L H U L A M
N O I T O P H N I E C T G F V
U C F O K Q N H T T R K A N D
E A Q O Y F Z B C H A V E V D
B V B F W L I I W M G O N W F

ROBIN HOOD

&

THE RIDDLES OF SHERWOOD FOREST

ABOUT THE ARTISTS



Zoe Kaye (Corporal Kewty, Slate) originally from Herefordshire, U.K., received a Distinction Certificate in her Performing Arts exam for L.A.M.D.A and studied Children's Theatre at Herefordshire College of Art and Design where she performed in the Herefordshire Performing Arts Festival. Zoe has lived in Portugal for over a year and is looking forward to her first year with Avalon Theatre Company.



Meg Thurin (Petunia PrettyNose, Greta), graduated from John Cabot University with a Bachelor of Arts and received her postgraduate degree from the Istituto Arte Artiginato e Restauro, Rome, Italy. Since moving to Portugal in 2009, Meg has worked with Avalon Theatre Company and has also participated in various voice-over projects and has performed in a recent TV sitcom pilot filmed in Lisbon.



Cesar Ribeiro (Oliver Cromwell, Thor) trained in Speech and Drama at Trinity College in London. Originally from Zimbabwe, Cesar is also a singer and has studied Modern Dance, Tap and Jazz. From Shakespeare to children's theatre, he has performed in the Polka Theatre in the United Kingdom and the Waterfront Theatre, Pretoria State Theatre and Baxter Theatre in South Africa. Television appearances include *CAVE GIRL* for BBC1. Cesar has lived in Portugal for 6 years and most recently appeared in Filipe La Féria's *A CANÇÃO DE LISBOA* at Teatro Politeama and in *PETER AND THE WOLF* with Os Primeiros Sintomas. This is Cesar's debut year with Avalon Theatre Company.



Grant Shepherd (Captain Vane, Slab) – Grant has lived in Portugal for over 10 years and has been involved in a number of productions, both as actor and director. He studied Drama at University College of Wales, Aberystwyth, where, as well as acting and directing, he specialised in Shakespeare, Neo-classical French and Restoration Theatre. Directorial credits include *The Virtuoso* by Thomas Shadwell, *The Winter's Tale* by William Shakespeare; *True West* by Sam Shepard; and *The Country Wife* by William Wycherley. Favourite roles include Lee (*True West*); Leontes (*The Winter's Tale*); and Vindice (*The Revenger's Tragedy*). Grant appeared in the TV series "Equador" as William Cadbury. Grant is a founding partner of Avalon Theatre Company.

